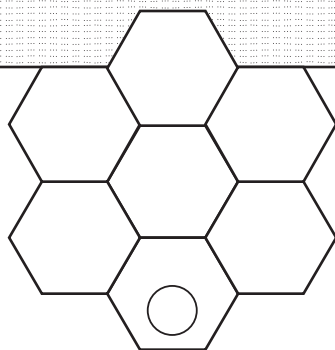
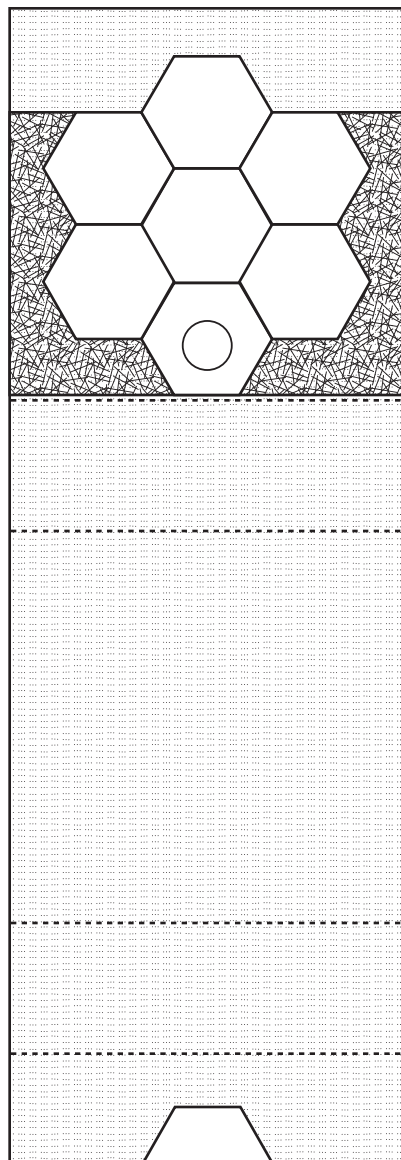


Scale test.  
This square should  
measure 1" x 1".



**Piece A - Pouch**  
Cut 1 fabric, 1 lining,  
and 1 fusible interfacing

**Piece B - Pocket**  
Cut 2 fabric and  
1 fusible interfacing

**Piece C - Divider**  
Cut 2 lining and  
1 fusible interfacing

**Piece D - Accordion**  
Cut 4 lining and  
2 fusible interfacing



**Piece E -  
Flower Backing**  
Cut 2 lining and  
2 fusible interfacing

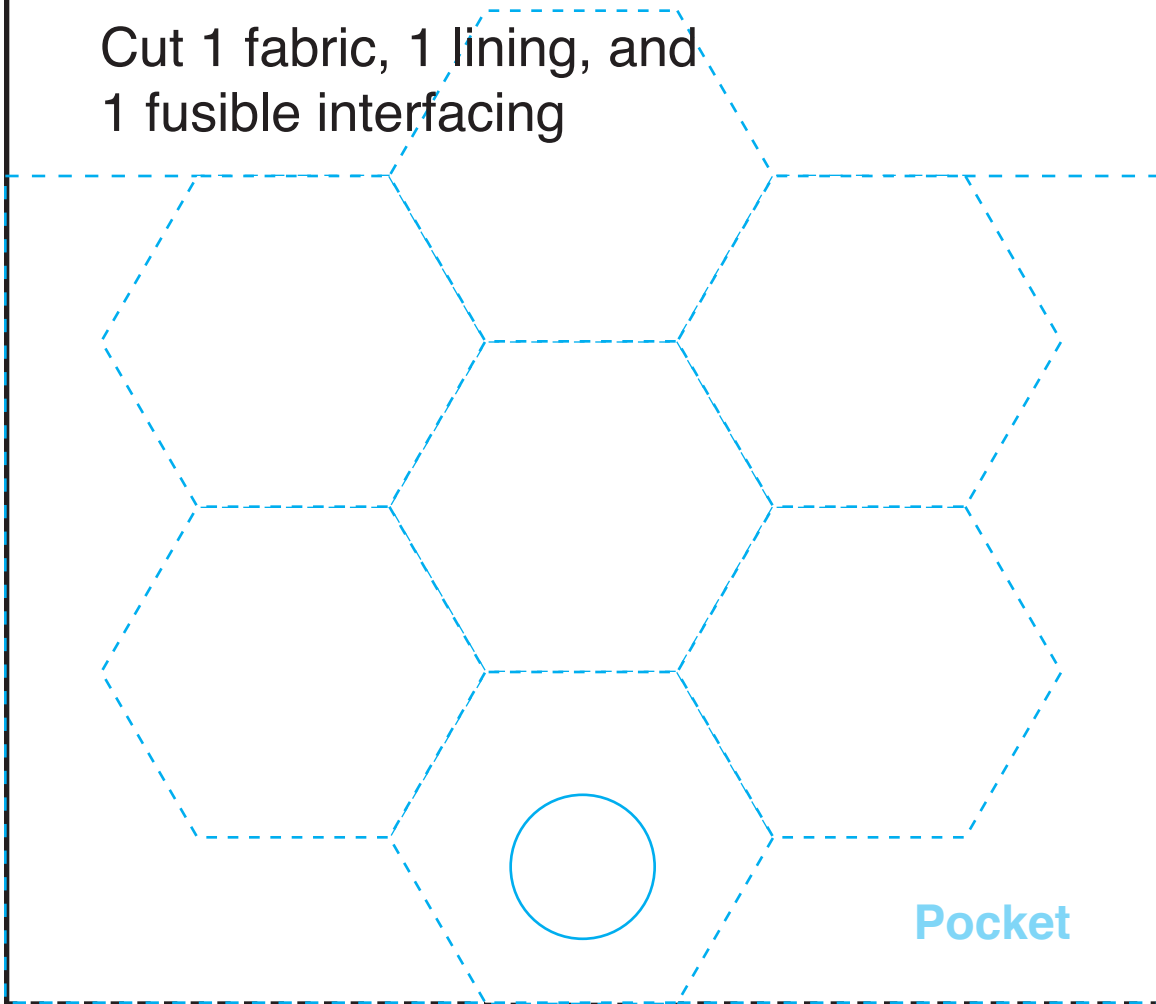


Blue dotted lines indicate flower block placement only. Disregard when cutting out patterns.



## Piece A - Pouch

Cut 1 fabric, 1 lining, and  
1 fusible interfacing

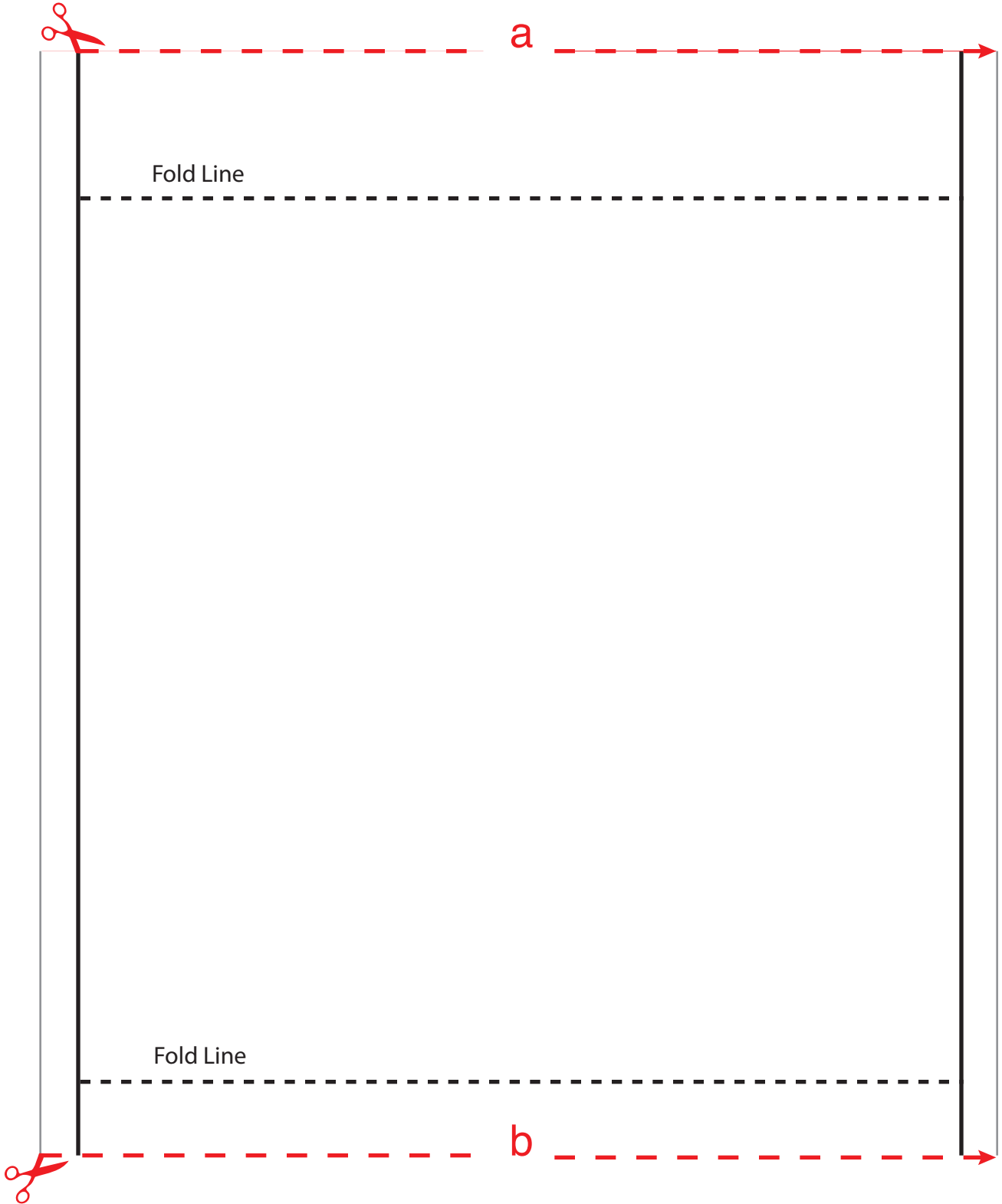


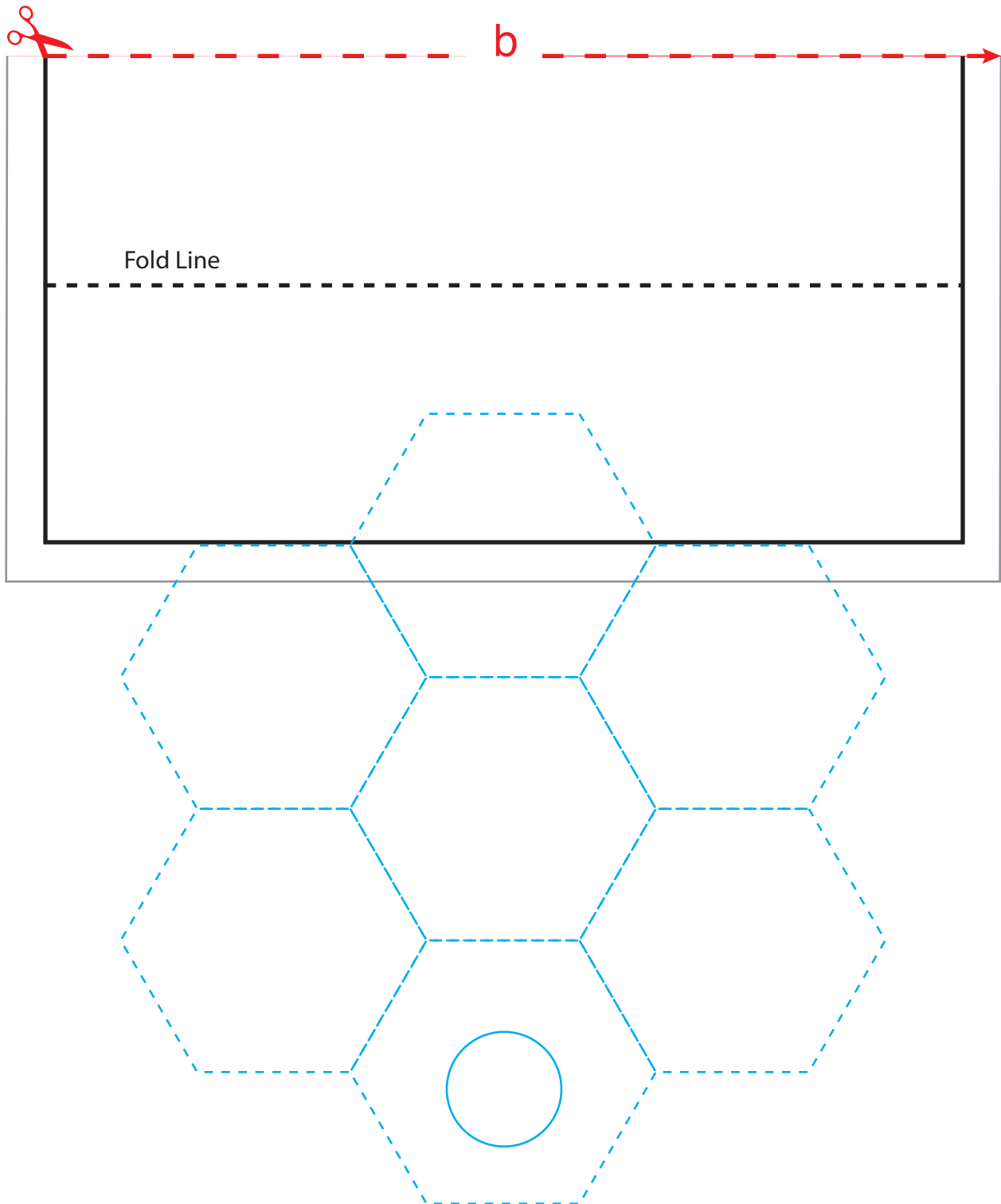
Fold Line

Pocket

a









## **Piece B - Pocket**

Cut 2 fabric and  
1 fusible interfacing



## **Piece C - Divider**

Cut 2 lining and  
1 fusible interfacing



## **Piece D - Accordion**

Cut 4 lining and 2 fusible interfacing

-----  
Fold Line



